

GLADIUS mini



Introduction



Chasing-Innovation Technology Co.,Ltd.
www.chasing-innovation.com

eaStar.online



Conquer the Waters

GLADIUS MINI is the first five thruster mini size underwater drone in the world. Equipped with a 4K UHD camera, diving up to 330 feet deep.

All around are for perfect underwater photography and exploring.

On the basis of generation product, it increases the depth mode and $\pm 45^\circ$ adjustable tilt-lock mode.

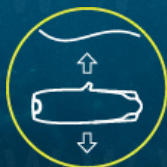
The submarine's fuselage and five-propeller design make the GLADIUS MINI more stable and easier to operate while filming underwater.



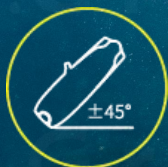
4K UHD Camera



Portable Backpack



One Touch
Lock-Depth Mode



$\pm 45^\circ$ Adjustable
Tilt-Lock Mode



One Touch
Share on Social



Dive to 330ft



Live Stream
(YouTube/Facebook)



2hr Runtime

Thrusters



Tether Connector



LED Lights



4K Ultra HD Camera

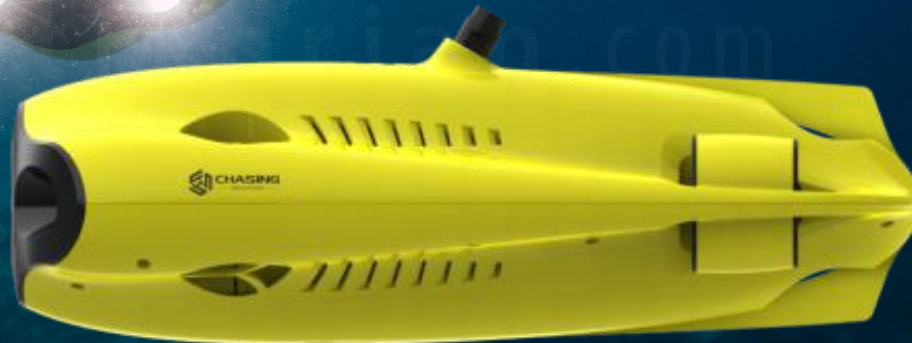




Width 8.9 in



Thickness
5.4 in



Length 15.2 in

Main Components



Winder & Tether



ROV



Remote Controller



Portable

One Backpack,
Take your trip right away.

MACBOOK PRO

15" screen

GLADIUS MINI

9.4 in



13.7 in



8.9 in

15 in

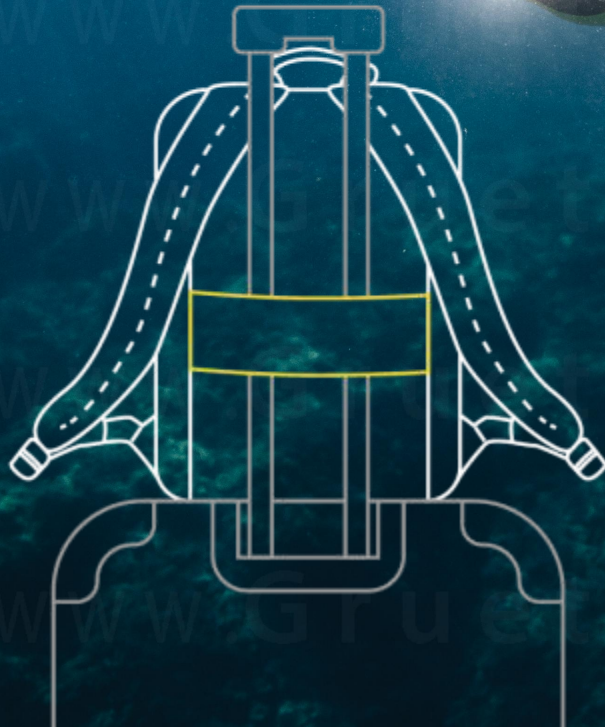
© www.Gruettorian.com

Portable

Grab your backpack and start your adventure

- Even in complex environments.
- Reflective strips protect you in the dark .

Weight: <5.5lbs



A diver wearing a black mask and a yellow fin is reaching out towards a yellow underwater scooter in clear blue water. The diver is positioned on the right side of the frame, and the scooter is on the left. The water is bright blue and clear, with some rocks visible at the bottom. The diver's hand is extended towards the scooter. The scooter has a yellow body and a black fin. The diver's mask is black with a clear lens. The diver's fin is yellow with a black strap. The diver's hair is brown and tied back. The diver's necklace is visible. The diver's hand is open and reaching out. The scooter is a yellow underwater scooter with a black fin. The scooter has a yellow body and a black fin. The scooter is positioned in the lower left quadrant of the frame. The scooter is a yellow underwater scooter with a black fin. The scooter has a yellow body and a black fin. The scooter is positioned in the lower left quadrant of the frame. The scooter is a yellow underwater scooter with a black fin. The scooter has a yellow body and a black fin. The scooter is positioned in the lower left quadrant of the frame.

4K UHD Photography

Illuminate the underwater world.



LED Lights

Brightness: 1200 lumens
(Adjustable)

Color Temperature: 4500K

CRI: 80

4K UHD Camera

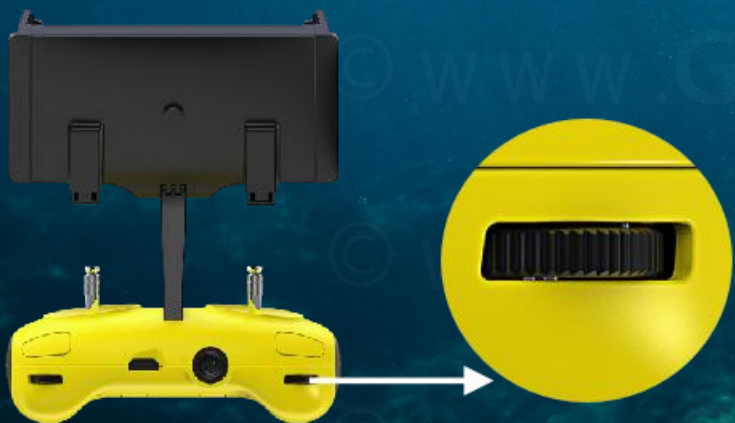
Video Resolution: 3840*2160 30FPS

Photo Pixel: 12M

Lens: F2.8 FOV=95°

±45° Adjustable Tilt-Lock Mode

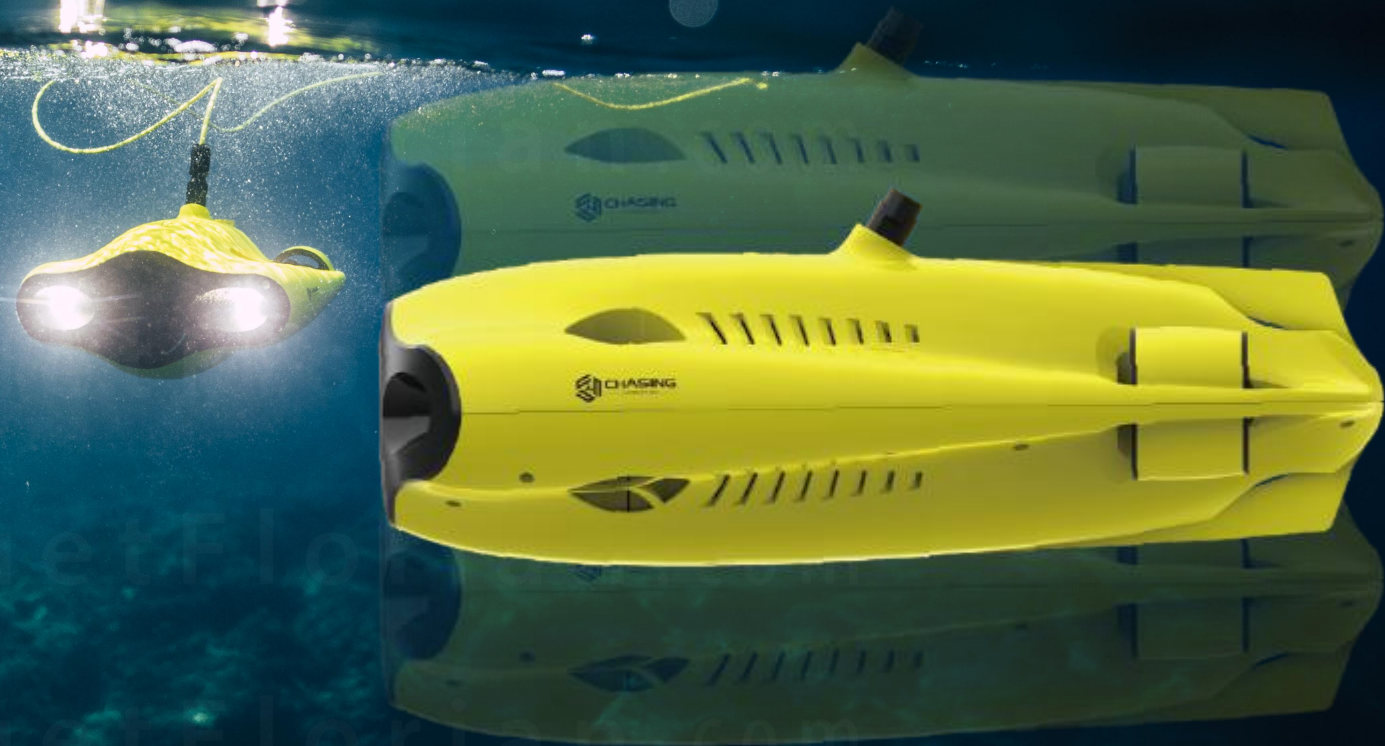
The drone's pitching angle can be adjusted by ±45° while can move forward or backward in Tilt-Lock Mod.



Depth-Lock Mode

The Depth-Lock mode can be set by One-Button on the controller.

The drone can hover at a fixed depth in the water or is able to move vertically in this mode.



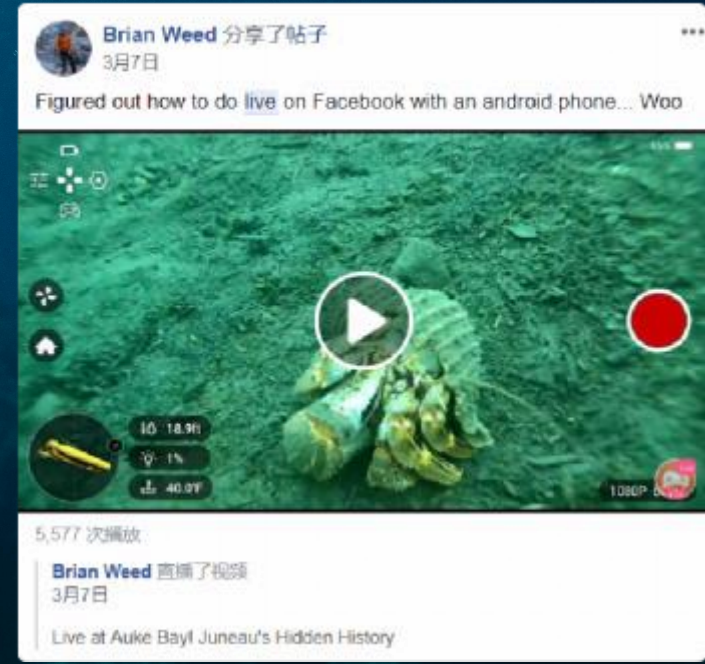


Real-time Share

Show your underwater adventures to everyone.

Live Stream Online

Let the whole world see your underwater adventure in real-time



Share on a Big Screen



Share on Multiple Devices

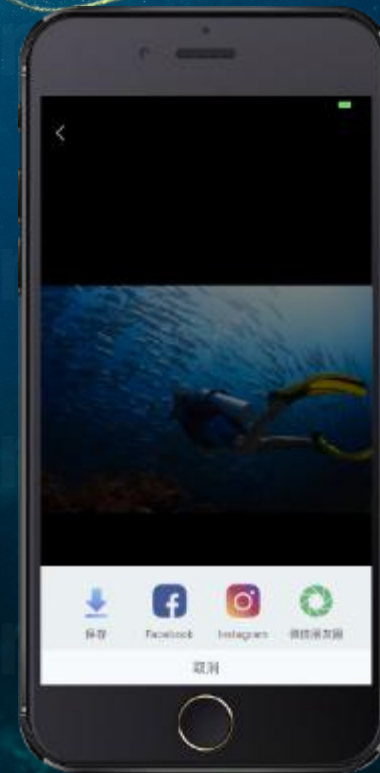
Be able to support Max. three smartphones or tablets wirelessly connect to drone at same time.

One as master device, and other two as slave devices (watch only).



Real-time Share

Quickly share the highlights from the deep sea.



Explore

More Underwater Unknown

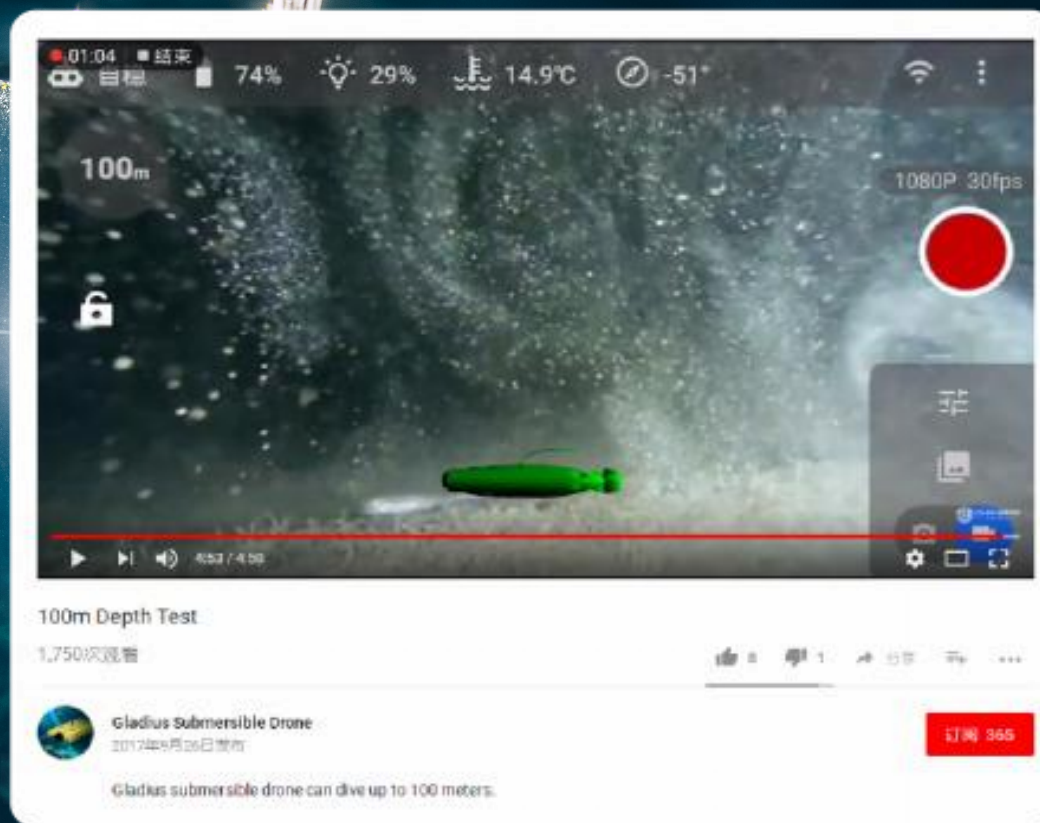


Dive to 330ft

Dive deeper, More adventure.



165ft Tether (Default)

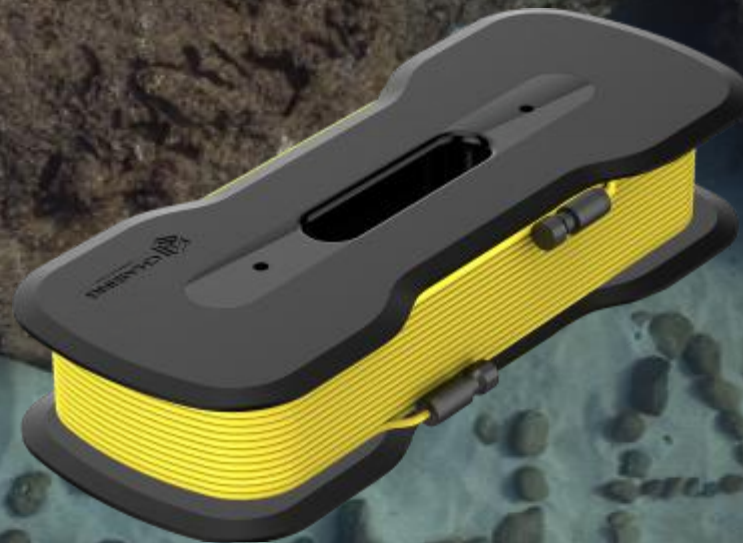


Click to [see](#) full video

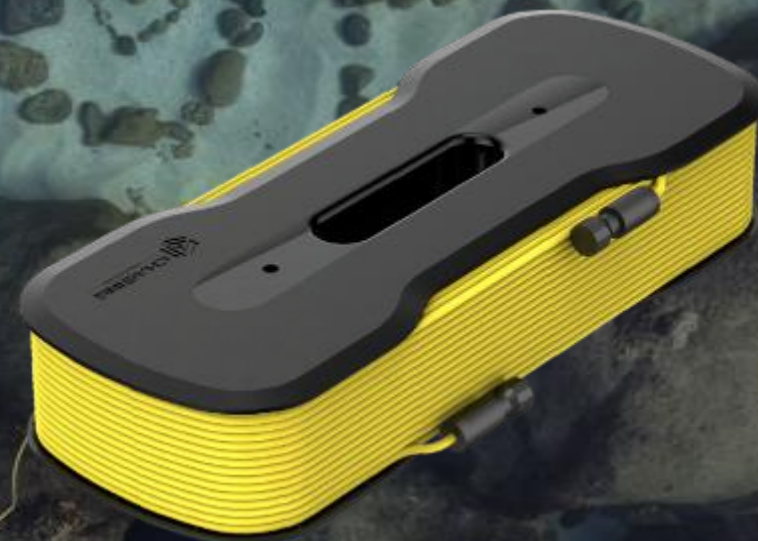
Replaceable Tether

Double connectors Default 165ft.

Allow users to change the tether and extend the cruise range and explore more of the unknown. (Optional 330ft or 660ft tether)



165 ft



330 ft



660 ft

A close-up, underwater photograph of a diver. The diver is wearing a black diving mask and a blue regulator. They are wearing a dark-colored bikini top. A yellow, rectangular device is attached to their left wrist by a thin black cord. The device is floating in the water. The background is clear, turquoise water with sunlight filtering through from the surface, creating shimmering patterns. A dark blue horizontal bar is overlaid on the right side of the image, containing white text.

Great User Experience

GLADIUS MINI is fun and easy to use.

Game-Like Controller

Support 5inch phones to 10.5inch tablets,
compatible with IOS and Android system.

 iPhone  Android



VR Immersive Experience



Small Size, Long Battery Life



Charge 1.5hrs
2hrs of use



Charge 2hrs
6hrs of use

Application For Consumers



【 Dive Photography 】

It can record the whole diving activities in high definition video, help the diving center to find the diving spot, and shoot teaching video, etc.

【 Island Tourism 】

Enjoy a sunny beach with your traveling companions, explore the ocean floor without diving, and enjoy exploring and sharing the underwater world.

【 Yacht And Fishing 】

Yacht out to sea entertainment, looking for and observing underwater schools of fish, help players accurately hunt.

Drone

Size	15.2x8.9x5.4 inch
Battery Capacity	55.5Wh (5000mAh)
Weight	<5.5 lbs
Buoyancy	-0.02 lbs~.02 lbs
Operating Temperature	14°F~140°F
Maximum Depth	328 ft
Maximum Speed	4Kn (2m/s)
Maximum Rise/Fall Speed	2Kn (1m/s)
Maximum Flow Resistance	2Kn (1m/s)
Battery Life	2h(Forward at low speed in fixed depth mode)
Battery Cycle	>300 times

Dimmable LED Lights

Brightness	2x1200LM
Color Temperature	4000K-5000K
CRI	80
Maximum Power	2x10W
Dimming	Manually adjustable

Tether & Winder

Weight	2.65lbs(164 ft)/3.97lbs(328 ft)
Tether	50m/100m

Sensor

IMU	Three-axis gyroscope/acceleration/compass
Depth Sensor	+/- 1.64 ft
Temperature Sensor	+/- 35.6°F

Camera

CMOS	1/2.3 inch
Aperture	F3.0
Focal Length	4.0mm
ISO Range	100-3200 (Still camera only)
Field of View	95°
Maximum Image Resolution	12M(4000*3000)
Image File Types	JPEG/DNG
Video Resolution	FHD: 1920x1080 30Fps
	FHD: 1920x1080 60Fps
	FHD: 1920x1080 120Fps
	UHD: 3840x2160(4K) 30fps
Video Maximum Stream	60M
Video Type	MP4
SD Card Memory	64G

Remote Controller

Size	6.3*6.1*4.9 inch
Weight	0.685kg
Battery capacity	2500mAh
	≥6H
Battery life	(Depend on working condition)
Wireless	Wi-Fi
HDMI	1080P

Adapter

Adapter	3A/12.6V
Drone charging time	2h
⚠️ Note:Maximum image resolution	

